



TÜRKİYE ULUSAL AJANSI
TURKISH NATIONAL AGENCY



Erasmus+

Inclusive Education for Refugees in Youth Work Context

*01-09 February 2017
Elazığ, Turkey*

Erasmus+ KA1 Mobility of Youth Workers

30 Participants

Project Information

Mainly of the refugee population is young people aged between 13-30 and when it is looked up the percentage of young population (aged 13-30), it is around %60 and in Turkey the counts get more and more to the %80 of all refugee population. Most of those young people had to be educated to prevent their marginalization in future and included in the society. Towards those issues, with parallelly to School Education, there should be opportunities for young refugees to participate education processes in Youth Sector.

With the project, we would like to carry out this project to address the problem of inclusion of refugees in non-formal education context in youth work and create synergies among the participating organizations to future cooperation for the inclusive education methods.

Thus, the project proposal aims to strengthen the competences of youth workers and youth leaders in finding proper approaches

for fostering the inclusion of refugees and also marginalized young people with migration background. More specifically the projects' objectives are;

- To strengthen the understanding of inclusion and its challenges for young refugees and young people with migration background
- To create strategies on youth work context to improve the quality of youth services which are develop for refugees and young people with migration background
- To explore the role of youth work in inclusion strategies on educational services
- To create and implement local activities on inclusion of young refugees and young people with migration background
- To strengthen ties between people and organisations engaged in the field of youth work

Participants Profile & Language

- **Motivation to take part in a mutual learning process in a intercultural setting**
- **has interest to work on inclusion topic of young people with fewer opportunities and young refugees**
- **sensitive on the migration topic and willing to create follow-up actions**
- **has a sufficient level of English (B1-C1)**

Visa Requirements

Turkey is not yet in the EU so please bring along your passports! Some of you may need visa. You can get visa in airport. Please check the board before the passport control if you need visa or not.

It costs 20 USD (18 EUR) if you buy from e-Visa and if you buy in the border, it costs 25 EUR.

Please check your passports that your arrival date is 6 months before your passport expiry date!

Visa cost will be reimbursed %100 when it is presented.

For visa, you do not need apply for a visa and you can obtain in the border or from the website of the Turkish Foreign Ministry.

Link for the Visa Service : <https://www.evisa.gov.tr/en/>

Information About City

Elazığ is a city in Eastern Anatolia, Turkey and the administrative center of Elazığ Province. It is located in the uppermost Euphrates valley. The plain on which the city extends has an altitude of 1067 metres. Elaz resembles an inland peninsula surrounded by the natural Lake Hazar and reservoirs of Keban Dam, Karakaya Dam, Kralkızı and Özlüce. Elazığ initially developed in 1834 as an extension of the historic city of Harput, which was situated on a hill and difficult to access in winter. The city of Elazığ was founded among the skirts of the hill on which the historical Harput Castle was constructed.

The ancient town and citadel called Kharput (Kharpert), which means "rocky fortress" in Armenian, was built by the first Armenian kings about five km (3.1 miles) from modern Elazığ. However, very little written material about this city reached our day. It is possible that Harput stands on or is near the site of Carcathio-certa in Sophene, reached by Corbulo in A.D. 65. The early Muslim geographers knew it as *Hışn Ziyād*, but the Armenian name, Khartabirt or Kharbirt, whence Kharput and Harput, was generally adopted in time.



William of Tyre wrote that Joscelin I, Count of Edessa (Jocelyn) of Courtenay, and King Baldwin II of Jerusalem were prisoners of the Amir Balak in Kharput's castle and that they were rescued by their Armenian allies. William of Tyre calls the place Quart Piert or Pierre. Harput and its vicinity fell under Turkish control in the year 1085 as the outcome of the Manzikert battle on August 26, 1071.

Harput is still partly settled today, but due to its high elevation and lack of water it is slowly in the process of being abandoned, with most of its residents moving to Elazığ. Harput still has a few thousand inhabitants.

Elazığ is situated at the northwestern corner of a 30-mile-long valley, known locally as Uluova (literally the Great Valley). The area's Armenians called this valley "Vosgetasha" (the Golden Plain). Its altitude is 3,300 feet: latitude and longitude are respectively: 38 degrees and 41 minutes North, and 39 degrees and 14 minutes East. Elazığ Province is surrounded by the Euphrates in the north, and since the completion of Keban Dam the rivers came to cover almost ten percent of the surface area (826 km.) of the province (8,455 km.). Elazığ's adjacent province borders are with: Erzincan (North-West), Bingöl (East), and Malatya (West).

Elazığ has a continental climate with cold and snowy winters and hot and dry summers. However, due to the natural and artificial lakes around the city, some partial variations from this climate is experienced.

Elazığ is served by Elazığ Airport which lies about 12 km (7 mi) from the city center. The airport is the 19th busiest airport in Turkey in terms of passenger traffic. There are daily domestic flights from/to Ankara, Istanbul and İzmir.

Travel Costs

We will reimburse travel cost during training course regarding to travel budget of the country.

! Note: Reimbursement of travel costs will only be done upon presentation of all (including return tickets) original tickets, receipt/invoices and boarding passes. Please print before all documents, which are related to travel expenses. This means that once home after the training, participants will be asked to send the originals of all return documents and boarding passes. Please remember to bring the original invoices – there will be no reimbursement without the original invoices and tickets with indicated Names of travellers, description of the journey, indication of cost and currency and date of travel.

Please do not lose your boarding passes; you will need them for reimbursement of travel cost.

!!! Note: Reimbursement will be done in EUR, regardless of the currency indicated on the ticket and receipt/invoice. Any tickets purchased in a local currency other than EUR, will then be converted and calculated according to the exchange rate of the month when the grant agreement for this project will be signed by the NA, as stated in the official European Commission web-site at

<http://ec.europa.eu/budget/inforeuro/index.cfm?Language=en>

!!!! Note: Finally, please make copies (or even better, scan or take photographs) of all tickets and invoices and email these to kanariyorumelazig@outlook.com before attending the exchange. This will be very helpful to organisers to begin processing the financial and reimbursement data so that all payments may be made as efficiently as possible.

The following only applies to participants travelling by plane:

You should arrive to Elazig before midnight of 1st of February and leave on 9th February

You can stay up to 3 days before or after the project. You should arrange your own accommodation then. We are not responsible for the time you spend in Istanbul or Elazig out of project period.

Country	Travel	Pax Count
Czech Republic	360 EUR	2 Pax
France	530 EUR	2 Pax
Spain	530 EUR	3 Pax
Sweedden	360 EUR	2 Pax
Italy	360 EUR	3 Pax
Latvia	360 EUR	2 Pax
Hungary	360 EUR	2 Pax
Portugal	820 EUR	3 Pax
Slovakia	360 EUR	2 Pax
Greece	275 EUR	3 Pax
Macedonia	275 EUR	3 Pax

Health Insurance

Health insurance is not provided and will not be reimbursed by the organisers. All participants are strongly advised to purchase private travel insurance, as costs of private health care in Turkey are quite high.

Travelling & Arrival To Venue

Elazig has only one airport and you can also travel by bus but keep in mind that it will take almost 20 hours to reach Elazig. So we suggest you to use flight options.

Once we have all your travel information we will pick you up from Elazig Airport.

We are going to stay in the Galaksi Holiday Resort in houses near by the lake and every body will share "HOUSE" with 5 people.

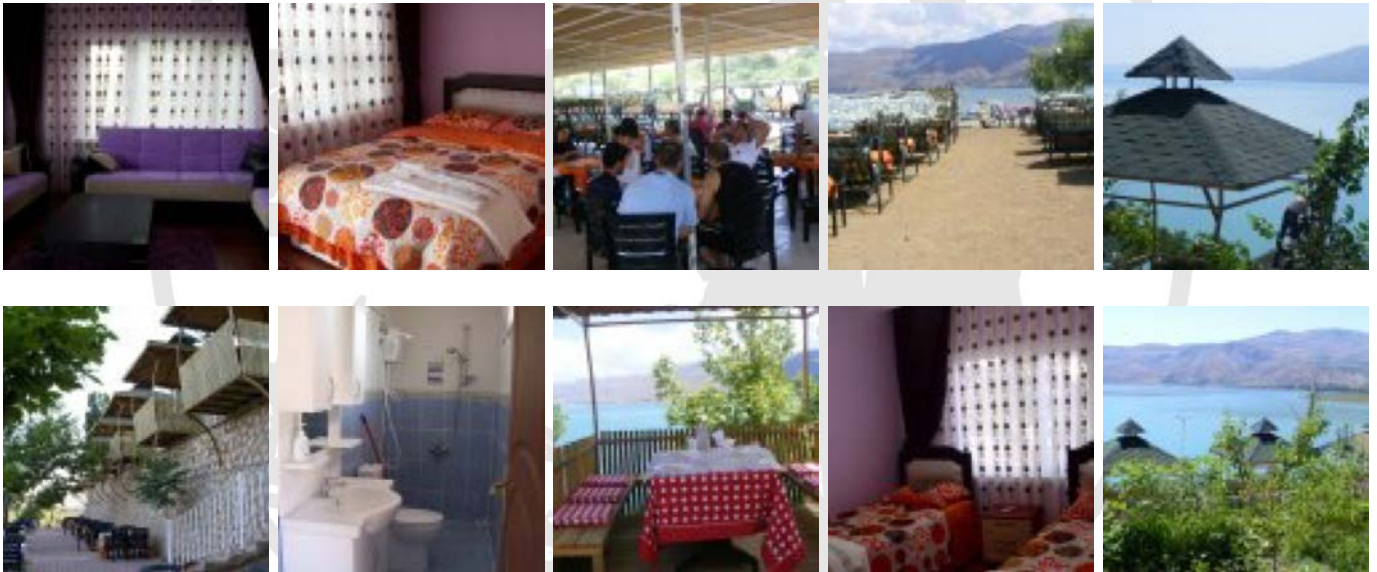
Website of the place : <http://www.galaksitatilkoyu.com>

Address: Galaksi Tatil Köyü
Elazığ - Diyarbakır karayolu 27. km
(Eski Orman Kampı)
Sivrice / Elazığ

Telephone: +90 (424) 425 10 23

Fax: +90 (424) 425 10 24

E-mail: iletisim@galaksitatilkoyu.com



Contact Information

For the urgent cases, in the border, during your arrival if you could not find our team or you miss the flight or some assistance you need! Please feel free to call :

Onur : + 90 541 694 50 74

E-mail : kanariyorumelazig@outlook.com