

Abroadship.org

Centre of Learning Through Mobility

ERASMUS+ YOUTH EXCHANGE

MIGRATION LAB 2.0

ASHFORD, UNITED KINGDOM

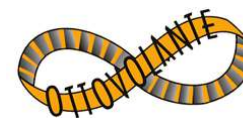
09 - 17 MARCH 2023



INOVATYVI KARTA
INNOVATIVE GENERATION



Co-funded by the
Erasmus+ Programme
of the European Union





**MIGRATION LAB
1.0**

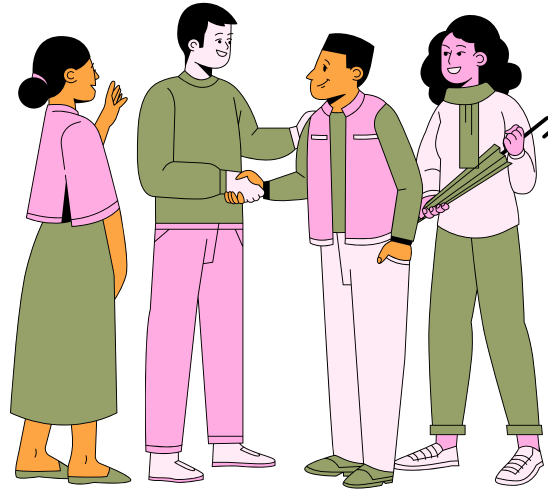
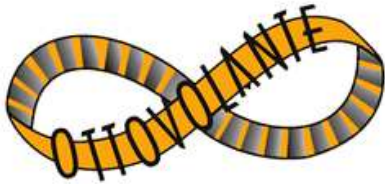
13 - 21 DECEMBER
2022

**MIGRATION LAB
2.0**

09 - 17 MARCH
2023



MIGRATION LAB



INOVATYVI KARTA
INNOVATIVE GENERATION



Migration is an expression of the human aspiration for dignity, safety and a better future. It is part of the social fabric, part of our very make-up as a human family.

Ban-Ki Moon, Secretary-General
of the United Nations

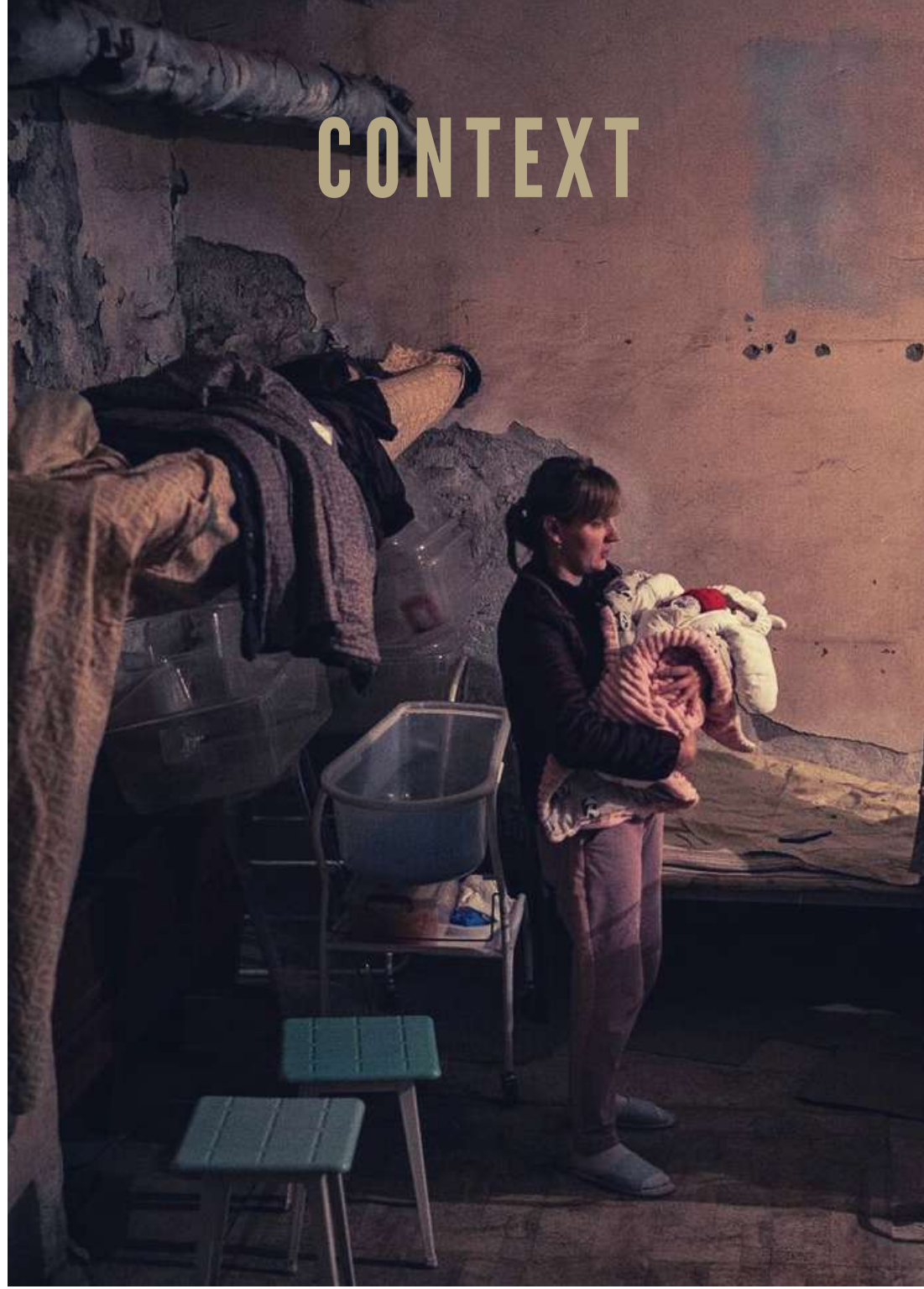
Photos on page 1,4 and 5 are taken
from Zelenskiy Telegram channel

The migration phenomenon is often exploited by the right-winged political elite as well as by the media in order to present it as a “crisis” and a threat to the culture and traditions of the respective host countries. Because of this, several obstacles and opposition are damaging the SHARING OF RESPONSIBILITIES and the commitment to adhere to a common European framework with regards to the migration issue.

This is directly undermining the founding principles of the EU and it constitutes what we want to change through this project, by encouraging European youth to collaborate and develop a sense of community. To make matters worse, poor integration is another result of the increasing hostility towards migrants. It becomes harmful not only to migrants themselves but also to the host countries which struggle to take advantage of the human capital that the migrants represent.

To facilitate a more efficient integration process, we want to RAISE AWARENESS AMONG EUROPEAN YOUTH about the migration phenomenon and put youngsters in the shoes of migrants to PROMOTE MUTUAL UNDERSTANDING as well as an EXCHANGE OF KNOWLEDGE, EXPERIENCES AND OPINIONS. We believe this to be the first step towards increased tolerance and acceptance of our differences.

CONTEXT





OVERALL FOCUS

- Provide with the necessary tools to better understand the current migration phenomenon, as well as to encourage the development and strengthening of values such as solidarity, tolerance, and mutual respect.
- Encourage to become active citizens who embrace an interest in civic issues and the main socio-economic changes that currently affect our society while respecting social and cultural differences.
- Learn from each other through a wide range of activities, including theatre, presentations, debates, cultural exchange, role-playing, etc.
- Develop the ability to respond with critical arguments to anti-migrant statements.
- Be able to promote important values, to encourage successful integration, to combat the rampant racism that we are facing and thus to create a more cohesive and inclusive society.



WHO SHOULD ATTEND?

You are 18-30 years old and wish to understand migration in order to be more inclusive and tolerant. You are ready to address or perhaps face(d) racial and religious discrimination. You are open-minded, care about nearby neighbourhoods, local, regional, national and international communities and are sensitive to human rights issues.

Participation is mandatory and in a **dignified** manner (in the morning you should be fresh and ready to seize the day).

Alcohol consumption is not allowed during program hours, and is advised to be moderate during the whole duration of the program as **this is an intensive exchange**.

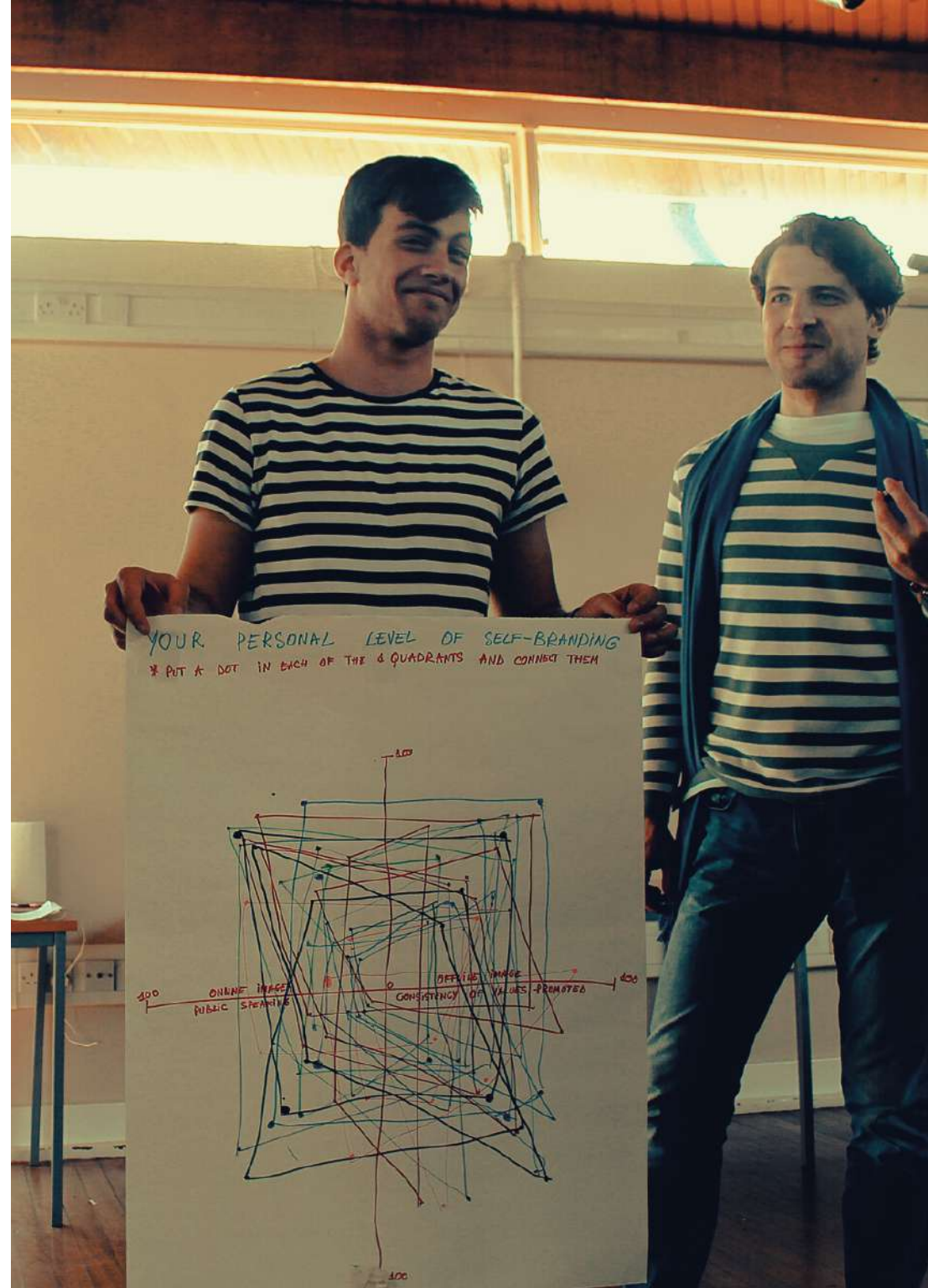
*Migrants and Refugees are not pawns on the
chessboard of humanity*

Pope Francis



DELIVERY STYLE

- "Learning by experience" - learning from experiencing different activities and putting them into practice;
- "Learning to play, playing to learn" - connected with learning through games, from actions and playful environment;
- "Learning through outdoors" - learning about sensitive topics while being outdoors and interacting with others;
- "Learning with nature" - being aware of the environment and its stimulus to brains, mental and physical condition





METHODS USED

- **Experiential learning**
- Group dynamic processes, simulations and **teamwork activities**
- **Theatre** sketches
- Dynamic workshops and **presentations**
- **Outdoor** work and assignments
- **Intercultural** sharings, learnings and reflections
- **Learning by doing** in a group setting or individual processes.



FINANCIAL COSTS

- 100% accommodation, food and program materials are covered by the grant from Erasmus+
- 80% traveling costs (only preapproved and the most economical - no first class, no taxi, no special seats, insurances, etc) are covered. Maximum traveling costs
 - €20/participant for UK;
 - €275/participant for Lithuania, Spain, Italy
 - €360/participant for Greece, Romania.
- For traveling reimbursement, it is mandatory:
 - online tickets: forward emails with e-tickets, boarding passes and invoices, it has to contain price and date.
 - offline tickets: bring original receipts (originals), copies will not be accepted.
 - Reimbursements will be sent as soon as possible, latest 30 June 2023, once (and if) participants:
 - **take part in the full duration of the programme**, in dignified manner,
 - fill out the evaluation forms
 - present all the travelling documents



MIGRATION LAB

WHERE?

KINGSWOOD CAMPS - GROSVENOR HALL
ASHFORD, THE UNITED KINGDOM

- Sleeping will take place in rooms of 3-6 people,
- Mixed nationalities,
- Separated by male and female,
- Food will be vegetarian.

Arrival Day: 09 March 2023 any time (dinner is at 19:00)

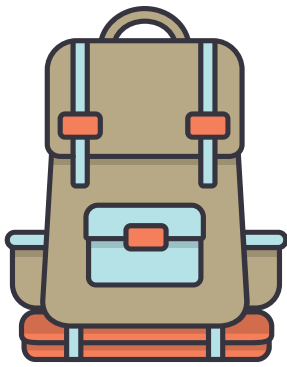
Programme: 10-16 March 2023, in total 7 full days

Departure Day: 17 March 2023, early morning

Days allowed to stay in the UK: This is a great time to explore the United Kingdom. We will not have much free time during the programme, thus if you want to explore the country, please arrange extra days. You are allowed to come max 6 days before the YE or leave after max 6 days after the YE, but the total amount of days that are not part of the programme is max 6 days. If you decide to stay more than 6 days longer than the official programme, you will have to cover the travelling expenses yourself. During these extra days, you have to find your own accommodation and no other expenses are covered (we will cover just flights on different days).

WHEN TO GET THERE?





PRACTICALS - WHAT TO BRING!

- Casual, warm and sports clothes for outdoors (take into consideration rainy British weather) and indoors;
- Small backpack (not necessary, but very practical for the outdoor walks);
- Towel and Hairdryer (if needed)
- **Passport is mandatory! EU ID cards are not accepted after BREXIT**
- Medicines
- Insurance - this is critical! Please bring European Health Card and Insure in other ways because we do not provide and are not liable for any incidents
- Food and traditions to represent for intercultural evenings

WEATHER

In March temperature in Grosvenor Hall ranges from 0 to 12 degrees, sunshine lasts ± 2 hours and of course of course (not so) beautiful rain (rains ± 10 out of 30 days) is a constant friend and a mandatory discussion subject in all conversations.

Check the weather forecast [here](#)





MEDICINE, ALLERGIES & DIET

The food provided in the venue will be **vegetarian**.

If you have an illness, physical limitations and/or use the medicine we need to know about, please let us know.

If you are vegan or have a special diet, let us know, indicating what you can and cannot eat, so that we can arrange suitable nutrition.

APPLY HERE

Fill in the application form available
https://bit.ly/MigrationLab2_apply



In order to apply for the Migration Lab 2.0 project, you must be over 18 years old and a citizen of one of the partner countries. Contact the partner organisation from the list below if you need any support.

Abroadship.org

Inovatyvi Karta

LaVibria Intercultural

Point of Vyou

Ottolovante

United Kingdom

Lithuania

Spain

Romania

Italy

Greece

hello@abroadship.org

inovatyvi.karta@gmail.com

info@vibria.org

pointofvyou@gmail.com

office@associazioneottovolante.com

hello@abroadship.org



For information, clarification, logistics,
general questions, please contact us at:

hello@abroadship.org

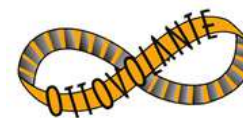
Migration Lab in England



INOVATYVI KARTA
INNOVATIVE GENERATION



Co-funded by the
Erasmus+ Programme
of the European Union



Abroadship.org

Centre of Learning Through Mobility



Global online platform of
opportunities abroad

Abroadship.org
@abroadship

